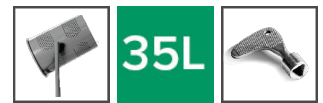


MUS with rain cover

PA624T

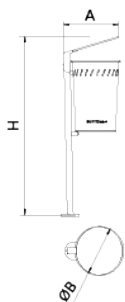


Tilting bin made of steel, with laser holes and central space for greater robustness or marking.

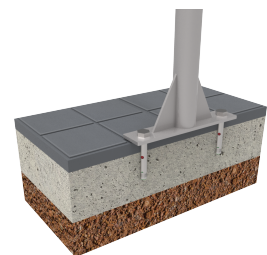
Treated with Ferrus, a protective process that guarantees high resistance to corrosion.

The Ferrus treatment consists of three layers applied after shot cleaning all impurities: an electrolytic bath, an epoxy coating and a forge black polyester paint coating.

Recommended anchoring: by means of M8 expansion bolts depending on the surface and the project.



Ref.	A	ØB	H
PA624T	360	325	1180
PA624TSB	360	325	1400



[Project sheet](#) | [CAD](#) | [Catalogue](#) | [Mounting instructions](#) | [HD image](#)