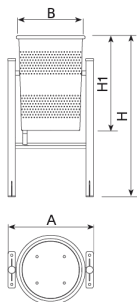
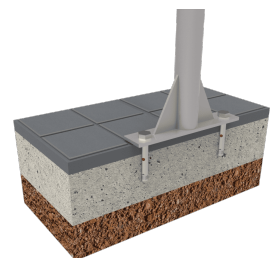




Litter bin made of AISI 304 bright polished stainless steel. Bin supported by a $\varnothing 40$ mm tubular structure with an anchoring base and rectangular bases with two $\varnothing 12$ mm holes to fix it to the ground.
Recommended anchoring: by means of four M8 expansion bolts depending on the surface and the project.



Ref.	A	$\varnothing B$	H	H1
PA600M	465	375	885	525
PA600MI	465	375	885	525



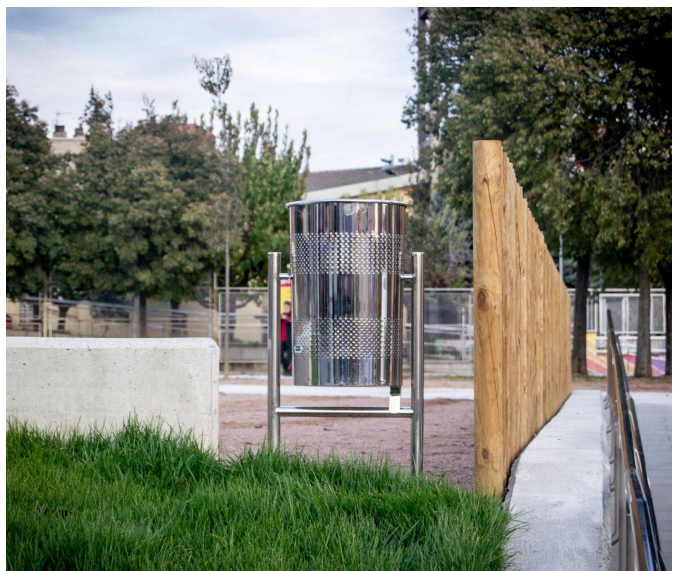
[Project sheet](#) | [CAD](#) | [Catalogue](#) | [Mounting instructions](#) | [HD image](#)

Available with:

Built-in CLIP ashtray VC4.

Available in:





The constant improvement and evolution of our products may result in some modifications of the technical specifications and characteristics of the products without prior notice.